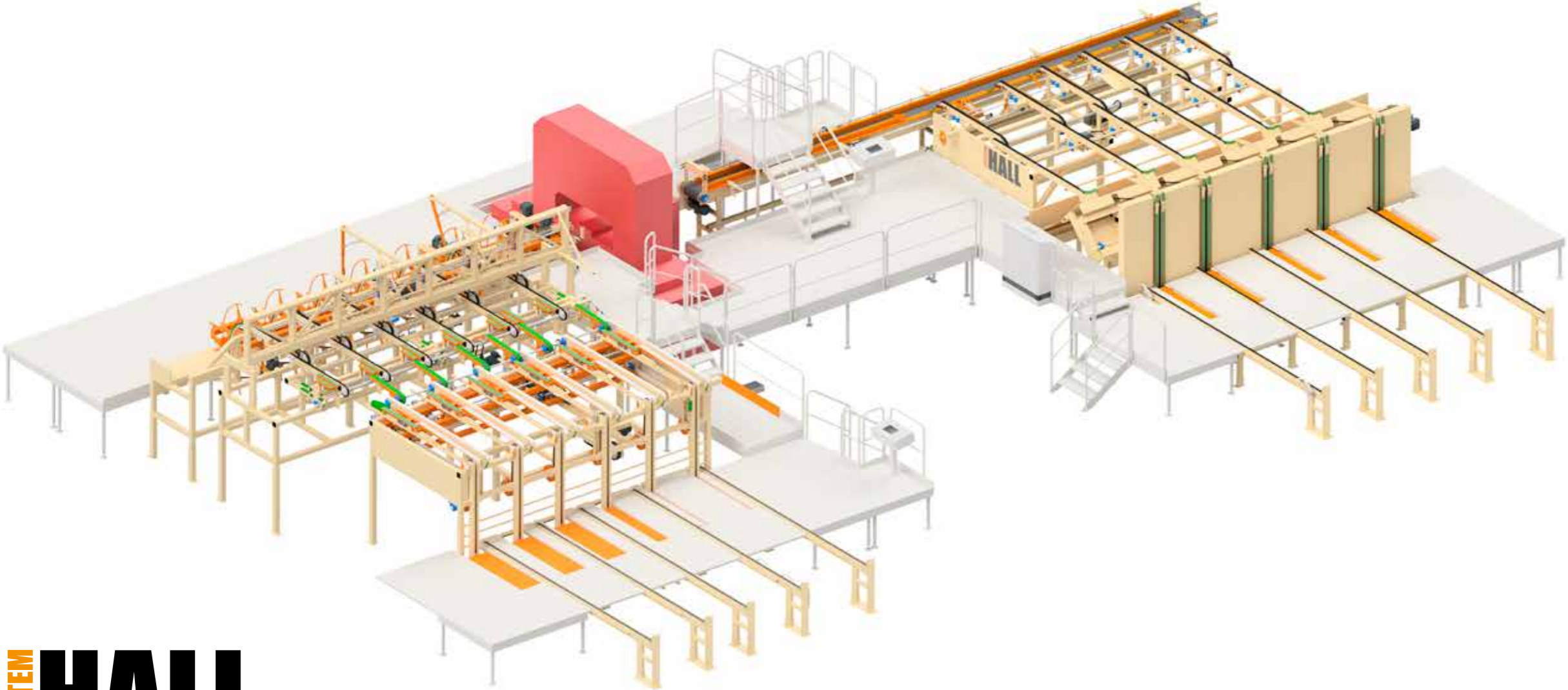


Overview line-setup



SYSTEM HALL

www.systemhall.com
sales@systemhall.com
Phone: +46(0)346 - 577 30

SYSTEM HALL

SBL60

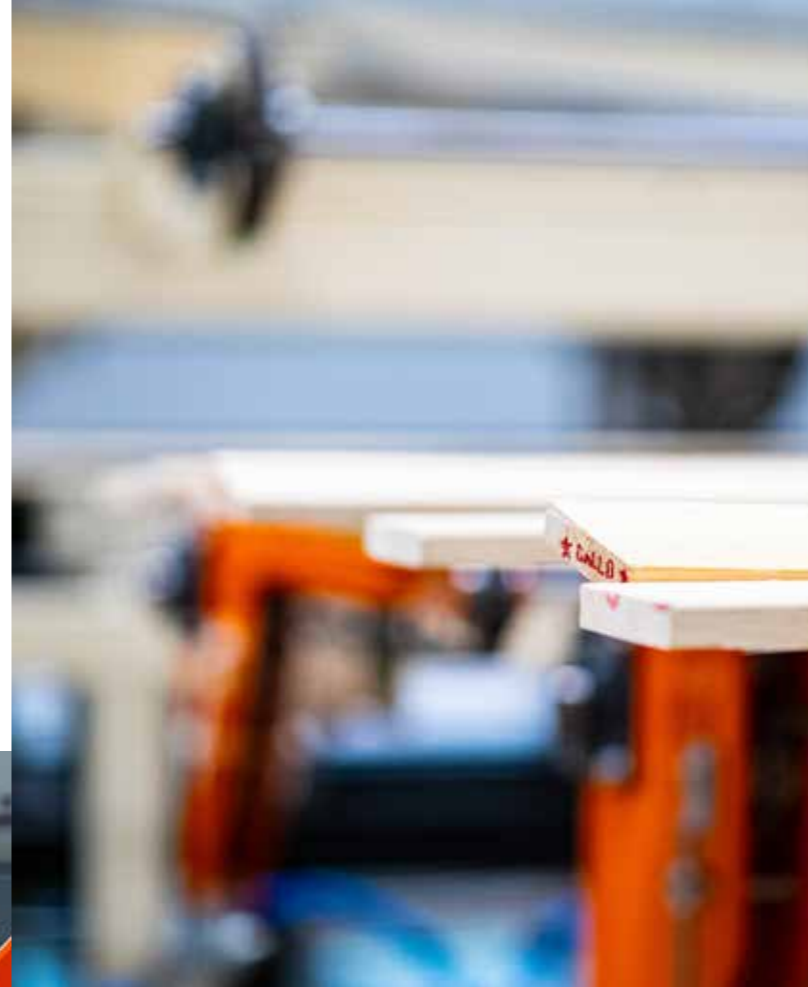
SBL 60 ENG 2 2023

Small bandsaw line 60

SBL60 is designed for the flexible production company. It's a one-man operation with fast manual adjustment possibilities. Combined with a tilt able bandsaw this unit can resaw many different profiles.

The units are developed over centuries and are well known for reliability and simple maintenance. All spare parts are directly available from the System Hall HQ. SBL60 is a real space saver, It only uses a area of 21 x 13 meters this enables you to place it even in the smallest facilities.

The rough footprint of the line is 22,21m X 14,26



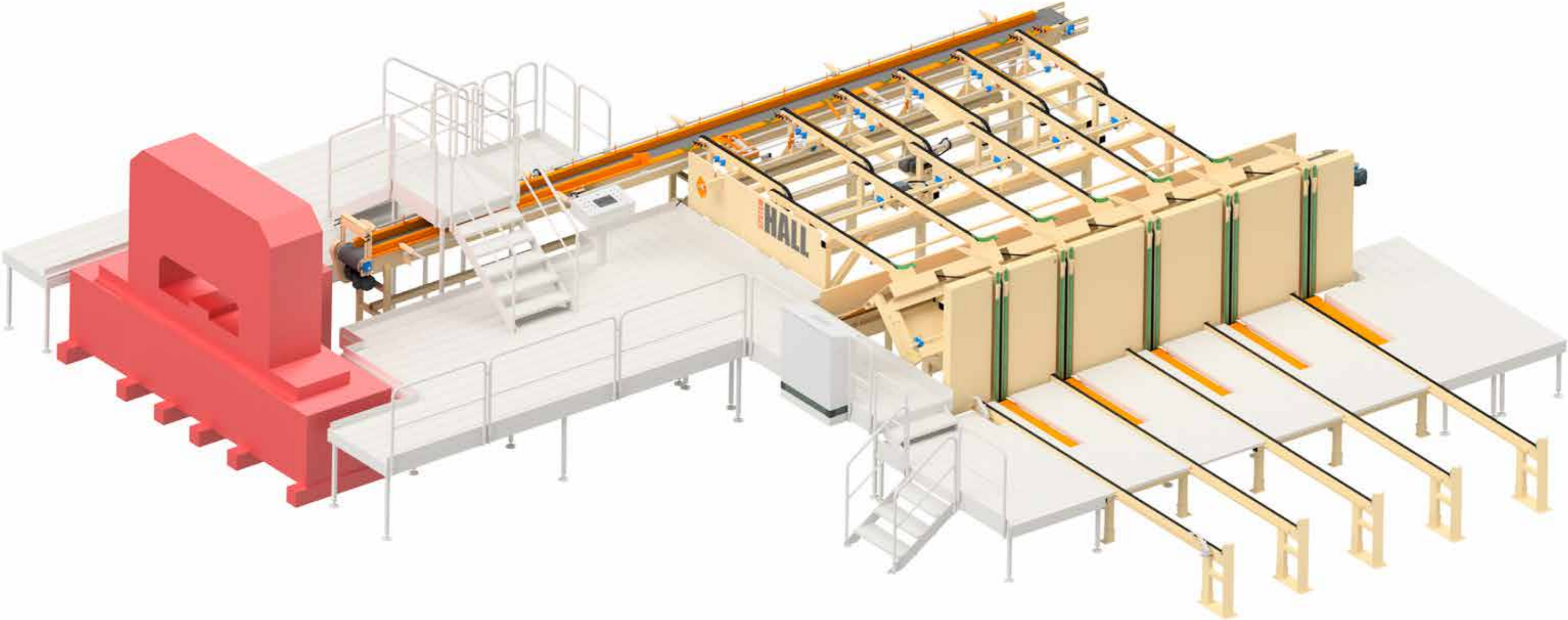
Technical

Small Bandsaw Line 60

Pieces per minute: 4,2 m pieces at 14 p/m
Length: 1,8 – 6 m
Max width: Before moulder 70 mm. after moulder 45 mm
Min width: 75 mm
Max thickness: 100 mm
Min thickness: 22 mm

Packet size (Infeed): 1,2 x 1,2 m
Packet size (Outfeed): 1,2 x 1,2 m
Max weight: 4000 kg
Color frame: RAL 1015
Color moving parts: RAL 2004

Sideview infeed



Sideview outfeed

